



23001 Industrial Blvd, Rogers, MN 55374 / 1-866-527-7637
www.motoalliance.com

DENALI Plow Mount

MA11758

**Coleman/Hisun/Massimo/
500/700**

Thank you for purchasing our Denali plow mount(s). You now own a premium, custom plow mount to allow you to use your plow with your SxS. Please note the following instructions and heed all warnings.

- Your UTV/SxS and/or plow system can cause death or injury; please use caution and common sense when operating your unit.
- Read your Plow Operator's Manual, your Winch Operator's Manual, and all warning labels before operating your UTV/SxS.
- Operate your SxS at a walking speed with the blade installed. Do not exceed 5 mph (8 km/h) even with the blade up.
- Do not operate the UTV/SxS on slopes greater than 10 degrees with the plow installed.
- Always lower the plow to the down position before leaving your UTV/SxS unattended.

SEVERE INJURY OR DEATH MAY RESULT IF YOU ARE NEGLIGENT.

Please verify that all hardware and parts are included in your package.

Kit Content: Please refer to Figure 1

Item	Qty	Description
1	1	MA11758 Plow Mount Base
2	1	MA11758 Plow Mount Top Plate
3	3	3/8"-16 x 1" Hex Head Bolt
4	3	3/8" Flat Washer
5	3	3/8"-16 Nylock Nut
6	2	M10 Flat Washer
7	2	M10 Lock Washer
8	2	M10-1.25 x 25mm Hex Head Bolt

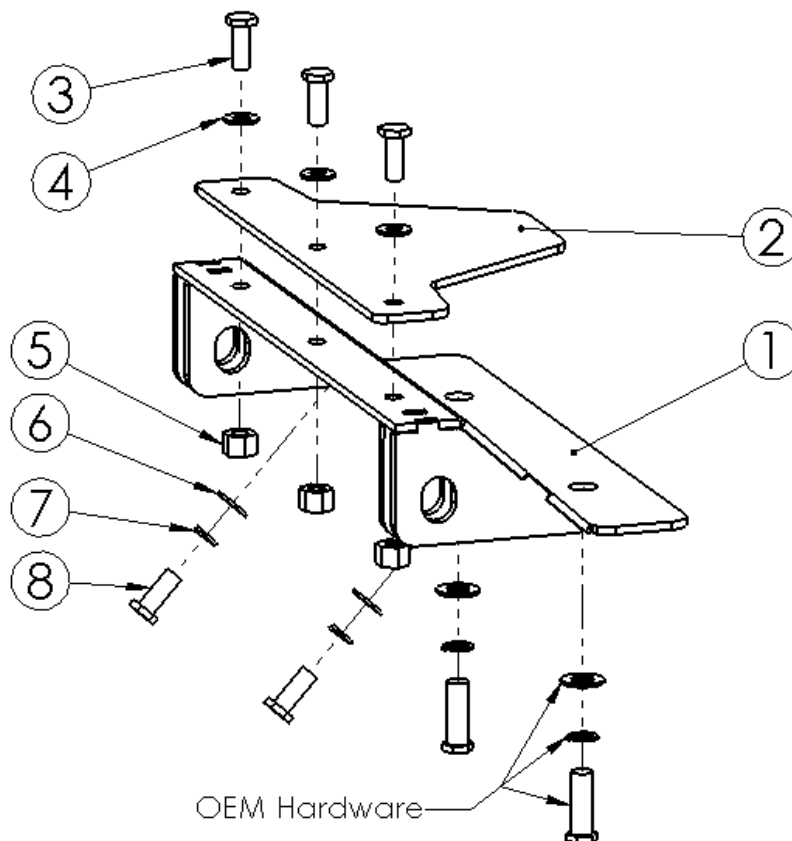


Figure 1

Plow Mount Installation Instructions

1. Begin by removing all seven of the M6 Bolts (8mm Socket) and Gold Positioning Washers at the front of the Coleman machine. Set aside the Plastic Skid Plate for later use.
2. With the plastic underbody lowered, remove the two Hex Head Bolts (15mm Socket) positioned in the bottom of the Coleman UTV. Position the MA11758 Plow Mount to the front of the Coleman as shown in Figure 2 and reinstall the two bolts removed in this step.

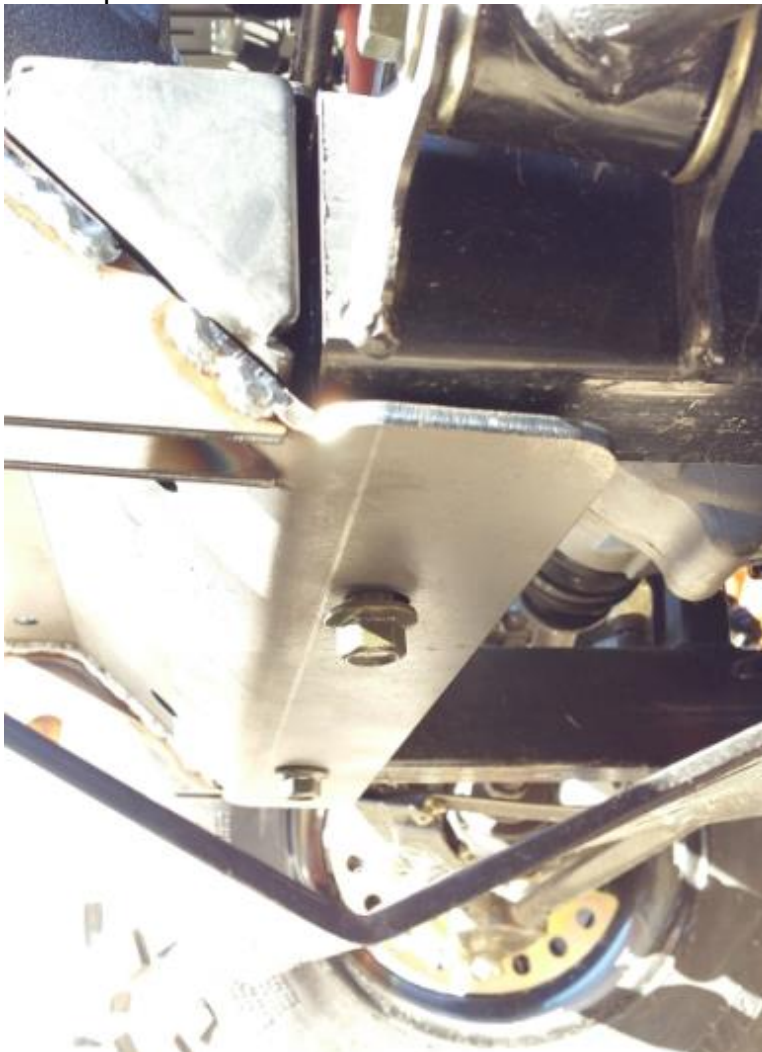


Figure 3

3. Insert the (2) M10 Hex Bolts (17mm Socket), Lock Washers and Flat washers into the front angled face of the Plow Mount Base as shown in Figure 4.

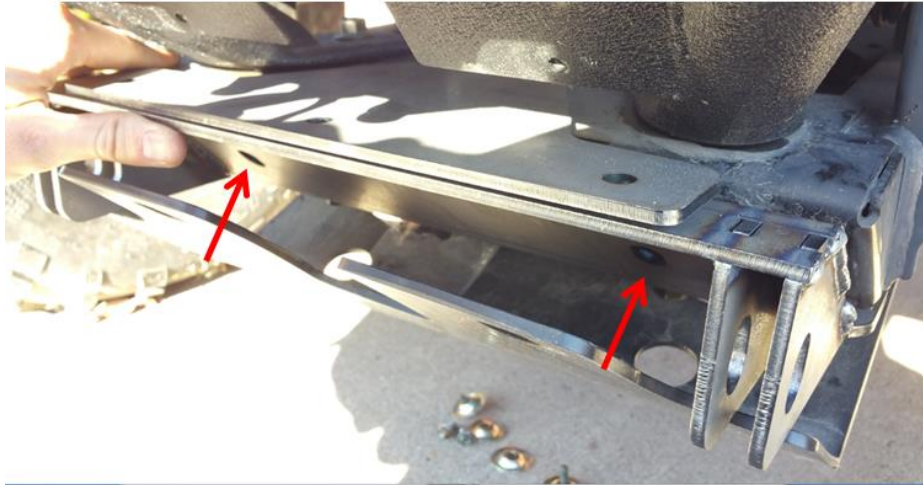


Figure 4

4. Set the Plow Mount Top Plate over the (3) holes in the top of the Plow Mount Base. Insert the (3) 3/8" Bolts (9/16" Socket), Washers and Nylock nuts to secure the Top Plate to the mount. See Figure 5.



Figure 5

5. Ensure all hardware is securely tightened.
6. Hold the Plastic Skid Plate into its original location and mark the point where the Skid Plate and Plow Mount overlap. Trim along the markings so that the Skid Plate sits flush to the underbody of the Coleman. Reattach the Skid Plate using the M6 Bolts and Gold Positioning Washers.
7. The MA11758 Plow Mount can be left on the vehicle year-round and acts as a metal skid plate when not plowing.